



Monitoring particulate matter in India: recent trends and future outlook

Pallavi Pant¹ · Raj M. Lal² · Sarath K. Guttikunda^{3,4} · Armistead G. Russell² · Ajay S. Nagpure⁵ · Anu Ramaswami⁵ · Richard E. Peltier¹

Received: 25 May 2018 / Accepted: 28 September 2018
© Springer Nature B.V. 2018

Abstract

Air quality remains a significant environmental health challenge in India, and large sections of the population live in areas with poor ambient air quality. This article presents a summary of the regulatory monitoring landscape in India, and includes a discussion on measurement methods and other available government data on air pollution. Coarse particulate matter (PM₁₀) concentration data from the national regulatory monitoring network for 12 years (2004–2015) were systematically analyzed to determine broad trends. Less than 1% of all PM₁₀ measurements (11 out of 4789) were found to meet the annual average WHO Air Quality Guideline (20 µg/m³), while 19% of the locations were in compliance with the Indian air quality standards for PM₁₀ (60 µg/m³). Further efforts are necessary to improve measurement coverage and quality including the use of hybrid monitoring systems, harmonized approaches for sampling and data analysis, and easier data accessibility.

Keywords India · Air quality monitoring · Air pollution policy · WHO Air Quality Guidelines · PM₁₀ · PM_{2.5}

Introduction

Particulate matter (PM) has been identified as one of the most critical environmental risks globally (Brauer et al. 2015) and poor air quality (AQ) including exposure to PM has been associated with morbidity and mortality due to respiratory, cardiovascular, and cerebrovascular diseases (Dockery et al. 1993; Dominici et al. 2006; Pope and Dockery 2006; Brook et al. 2010; Thurston et al. 2016). A significant proportion of

the global population lives in areas that exceed the World Health Organization (WHO) Air Quality Guidelines, particularly in low- and middle-income countries (van Donkelaar et al. 2015). PM also has climate effects including its direct role in light scattering and absorption of sunlight and thermal radiation and the indirect role in acting as cloud condensation nuclei (CCN) (Ramanathan and Carmichael 2008), and impacts visibility and general well-being (Levinson 2012; Singh et al. 2017; Zhang et al. 2017).

Electronic supplementary material The online version of this article (<https://doi.org/10.1007/s11869-018-0629-6>) contains supplementary material, which is available to authorized users.

✉ Pallavi Pant
pallavipnt@gmail.com

Raj M. Lal
rlal6@gatech.edu

Sarath K. Guttikunda
sguttikunda@gmail.com

Armistead G. Russell
ted.russell@gatech.edu

Ajay S. Nagpure
nagpureajay@gmail.com

Anu Ramaswami
anu@umn.edu

Richard E. Peltier
rpeltier@schoolph.umass.edu

¹ Department of Environmental Health Sciences, University of Massachusetts, 686 North Pleasant St, Amherst, MA 01003, USA

² School of Civil and Environmental Engineering, Georgia Institute of Technology, Atlanta, GA, USA

³ Division of Atmospheric Sciences, Desert Research Institute, 225 Raggio Parkway, Reno, NV 89512, USA

⁴ UrbanEmissions.Info, New Delhi, India

⁵ Center for Science, Technology, and Environmental Policy, Hubert H. Humphrey School of Public Affairs, University of Minnesota, Minneapolis, MN, USA

PM_{2.5} (particulate matter with an aerodynamic diameter less than 2.5 µm) is the specific fraction of the PM that is linked with human health impacts, and is often used as an indicator for air quality within a community, though PM₁₀ (particulate matter with an aerodynamic diameter less than 10 µm) is also found to have adverse health outcomes (Ostro et al. 1999; HEI 2011; Stieb et al. 2012; Shah et al. 2013). In India, 99.9% of the country's population resides in areas that exceed the WHO Air Quality Guideline of 10 µg/m³ (annual average), and half of the population resides in areas where the Indian National Ambient Air Quality Standard (NAAQS) for PM_{2.5} (40 µg/m³) is exceeded (Greenstone et al. 2015; Venkataraman et al. 2018). Per latest Global Burden of Disease (GBD) estimates, the average population-weighted PM_{2.5} concentration is 74.3 µg/m³, and exposure to outdoor (ambient) air pollution is linked to 133.5 deaths per 100,000 people per year (Cohen et al. 2017). Another study estimated that exposure to PM_{2.5} is linked to ~600,000 premature deaths per year in India (Chowdhury and Dey 2016); the status of epidemiological research with respect to air pollution is summarized in Gordon et al. (2018). Despite poor air quality, only a limited amount of data are available on air pollution trends in Indian cities, and there is a significant gap in our understanding of spatio-temporal patterns of air pollutants at the local, regional, and national level. Previous studies have called for better coverage in terms of air pollution monitoring, as well as better QA/QC (quality assurance/quality control) to ensure high-quality data (Guttikunda et al. 2014; Greenstone et al. 2015; Pant et al. 2016). However, to the best of our knowledge, there has been no concerted effort to summarize and evaluate existing regulatory AQ monitoring efforts and analyze associated datasets across India in the last decade. Furthermore, there is a lack of comprehensive information on the types of monitoring networks, and associated data availability across the country.

Considering the above issues and gaps, this manuscript reports on (1) regulatory PM_{2.5}/PM₁₀ data availability and key trends throughout India, and (2) current status of the national monitoring networks, plans, and limitations in India. Results of our data analysis and the underlying data are available upon request.

Ambient air quality monitoring in India

Regulatory AQ monitoring, mandated by the Air (Prevention and Control of Pollution) Act of 1981, is conducted in India under the aegis of the Central Pollution Control Board (CPCB) which operates under the Ministry of Environment, Forest and Climate Change (MoEFCC) (Figs. S1, SI). The first set of standards for AQ in India was adopted in 1982 followed by revisions in 1994 and 2009. Originally, there were separate standards for TSP (total suspended particles) and RSPM (respirable suspended particulate

matter, i.e., PM with aerodynamic diameter less than 10 µm; now typically referred to as PM₁₀), for residential, industrial, and sensitive zones. The standards were revised in 2009, including the promulgation of a uniform standard for PM_{2.5} concentration across all location types (http://cpcb.nic.in/National_Ambient_Air_Quality_Standards.php) (see Table 1). The standards for PM_{2.5}, both 24 h (60 µg/m³) and annual (40 µg/m³), are higher than the WHO Air Quality Guidelines (see Table 1), as well as standards in the USA and Europe. The following section discusses the major monitoring programmes in the country (see Table 2).

National Air Quality Monitoring Programme

The National Air Quality Monitoring Programme (NAMP) is the flagship air quality monitoring programme of the Government of India. As of September 2018, four key pollutants—sulfur dioxide (SO₂), nitrogen dioxide (NO₂), PM₁₀/RSPM, and PM_{2.5}—are monitored at 703 AQ stations across 307 cities and towns (<http://cpcb.nic.in/monitoring-network-3/>). The program is managed by the CPCB in coordination with the State Pollution Control Boards (SPCBs) and UT (union territory) Pollution Control Committees (PCCs). Other national organizations such as NEERI (National Environmental Engineering Research Institute) and regional/local educational institutions are also involved in sample collection and analysis.

Most of these stations (residential and industrial) are located in urban areas, and the coverage in the rural areas is sparse (Balakrishnan et al. 2014; Gordon et al. 2018). This is relevant to note since residential combustion emissions, typically associated with solid fuel use, are a key source of air pollution across the country (Balakrishnan et al. 2013; Venkataraman et al. 2018). Typically, sampling is conducted twice a week, with gas and PM samples collected for 24 h (4-h and 8-h periods respectively) (<http://cpcb.nic.in/monitoring-network-3/>). Outside of these 4- and 8-h time periods, no data is collected at the manual stations based on publicly available information. To ensure comparative sampling procedures across the NAMP stations, national guidelines have been set for monitoring and include information regarding siting criteria, QA/QC procedures, measurement methods, and data reporting (CPCB 2003; CPCB 2011). In addition to the monitoring sites under NAMP, several states including Maharashtra, Gujarat, Kerala, Odisha, Karnataka, Telangana, and Andhra Pradesh conduct ambient AQ monitoring at additional sites under State Ambient Air Quality Monitoring Programme (SAMP).

The CPCB has also set up a network of continuous monitoring stations (Continuous Automatic Air Quality Monitoring Station: CAAQMS) across major cities, and a suite of pollutants including PM (PM_{2.5} and PM₁₀), gases (SO₂, NO₂, NH₃, ground-level ozone (O₃), CO [carbon monoxide]), and BTEX (benzene, toluene, ethylbenzene, and xylene) are measured continuously year-round. Currently, cities

Table 1 Indian National Ambient Air Quality Standards (NAAQS) for PM and related components in India (*TEOM* tapered element oscillating microbalance, *AAS* atomic absorption spectroscopy, *ICP* inductively coupled plasma mass spectrometry, *ED-XRF* energy dispersive x-rayfluorescence, *GC-MS* gas chromatography-mass spectrometry, *FRM* federal reference method, *FEM* federal equivalent method, *lpm* liters per minute)

Pollutant	Unit	Time duration	NAAQS Standard	Recommended measurement method	WHO Air Quality Guidelines
PM _{2.5}	µg/m ³	Annual 24 h	40	<i>PM_{2.5} Gravimetric measurement</i>	10
			60	Filter type: PTFE 47 mm	25
PM ₁₀		Annual 24 h	60	Volume: 16.7 lpm	20
			100	Instrument: FRM or FEM equipment <i>PM₁₀ Gravimetric measurement</i> Filter type: GFA/ EPM 2000 Volume: 1132 lpm Instrument: High-volume sampler <i>Real-time, continuous measurement</i> TEOM/ β-attenuation	50
Pb		Annual 24 h	0.50	AAS/ICP on EPM 2000 or equivalent paper /	
			1.0	ED-XRF on PTFE filter	
Particulate BaP	ng/m ³	Annual	1.0	Solvent extraction followed by GC-MS analysis	
As			6.0	AAS/ICP on EPM 2000 or equivalent paper	
Ni			20.0		

with a population of more than one million are prioritized for CAAQM stations, and similar stations are expected to be set up across all state capitals and union territories (http://cpcb.nic.in/Amb_AQ_Monitoring.pdf). As of September 2018, there are 130+ CAAQM stations in more than 65 cities across India (https://app.cpcbcr.com/ccr_docs/caaqms_list_All_India.pdf). Most stations are operated as partnerships between the CPCB

and SPCB, with a state and federal cost sharing financial arrangement. Data from the CAAQM stations is also used for determination of the air quality index (AQI), which is publicly available online, via a smartphone app and historical data is archived on the CPCB website. The AQI is calculated using the national AQI methodology, compiled and approved by the CPCB in 2014 (CPCB 2014).

Table 2 Summary of currently operational air quality networks in India

		NAMP/SAMP/ CAAQMS	SAFAR	MAPAN	US Consulate
Purpose	Regulatory	x			
	Research		x	x	
	Other (e.g., public awareness)	x	x		x
Data	Real-time	x	x	x	x
	Manual	x			
Instrument type	High-volume sampler(s)	x			
	BAM (or similar)	x	x	x	x
Pollutant	PM ₁₀	x	x	x	
	PM _{2.5}	x	x	x	x
Air quality forecast	Yes		x	x	
	No	x			x
Open access to data	Real-time	x			x
	Aggregate	x	x		x
	None			x	
Funding	Government of India	x	x	x	
	Other				x

System of Air Quality and Weather Forecasting and Research

The System of Air Quality and Weather Forecasting and Research (SAFAR) network (<http://safar.tropmet.res.in/>) was launched in Delhi in 2010 by the Indian Institute of Tropical Meteorology (IITM, Pune) in collaboration with the Indian Meteorological Department (IMD) and the National Centre for Medium Range Weather Forecasting (NCMWRF) and is supported by the Ministry of Earth Sciences (MoES). The program currently runs in Delhi (launched in 2010), Pune (launched in 2013), Mumbai (launched in 2015), and Ahmedabad (launched in 2017) with plans for expansion to Bengaluru, Kolkata, and Chennai. The network has ten air quality monitoring stations (AQMS) in each city equipped with real-time, continuous monitors for a range of pollutants including PM₁, PM_{2.5}, PM₁₀, O₃, nitrogen oxides (NO_x), SO₂, black carbon (BC), methane (CH₄), non-methane hydrocarbons (NHMC), VOCs (BTEX) and mercury (Hg), and meteorological variables including solar radiation, rainfall, temperature, relative humidity, wind speed, and direction. At some locations, ammonia (NH₃) is also measured. Like the CPCB network, SAFAR also has a smartphone app, disseminating calculated AQI values for the criteria pollutants (as a city average) and anticipated AQI for the 2 days. This information is also disseminated on real-time display boards in each city. However, it is important to note that the AQI method utilized under this program is different from the national approach approved by the CPCB (see Table S1) (Beig et al. 2015). AQ data from the network are embargoed for 3 years but are available for public use (upon request and justification, submitted to IITM Pune) thereafter.

Modelling Atmospheric Pollution and Networking

The Modelling Atmospheric Pollution and Networking (MAPAN) program is currently operational in ~20 cities across India and is supported by the MoES. Pollutants monitored as part of this program include PM₁₀ and PM_{2.5}, O₃, CO, NO_x, CO₂, hydrocarbons, BC, and organic carbon (OC). PM monitoring is conducted using β -attenuation method (Met One Instrument Model BAM-1020 in at least two locations (Yadav et al. 2014; <http://www.ncess.gov.in/research-groups/atmospheric-processes-atp-group/laboratories/air-quality-monitoring-lab-aqml.html>), but it is unclear if the same instrument is used across all sites. Cities included in the network are Pune and Satara (Maharashtra), Thiruvananthapuram (Kerala), Bhubaneswar (Odisha), Chennai (Tamil Nadu), Jabalpur (Madhya Pradesh), Hyderabad (Telangana), Delhi (NCT of Delhi), Srinagar (Jammu and Kashmir), Udaipur (Rajasthan), Aizwal (Mizoram), Varanasi (Uttar Pradesh), Guwahati and Sonitpur (Assam), and Patiala (Punjab), although this list is likely not

comprehensive. In most cities, the air quality monitoring stations are being run in collaboration with local academic/research institutions. Data generated as part of this network are expected to be used for evaluation of the IITM air quality forecasting model, but very limited information is currently available in the public domain.

US Embassy/consulate monitoring stations

As part of the AirNow program, the US Department of State operates PM_{2.5} monitors in five major Indian cities—Delhi, Mumbai, Kolkata, Hyderabad, and Chennai—on the premises of the Consulate/Embassy in each city. The data are publicly available in near real-time through the AirNow website. AQI values are also published on the website of the Consulate/Embassy; however, it is important to note that the reported AQI value is based on the US air quality standards and uses a different formula, and as such is not directly comparable to the Indian AQI values. The instruments operate at the embassy/consulate grounds, relatively isolated from heavy traffic or industrial sources, and in most cases they provide PM_{2.5} measurements equivalent to an urban location in the cities.

Currently, data from the CAAQM stations are available online (<https://app.cpcbcr.com/ccr/#/caaqm-dashboard/caaqm-landing>), but data access is often limited and, in some cases, unavailable. Data from the NAMP stations can also be downloaded through the Government of India open data platform (<https://data.gov.in/>). Most SPCB websites also share ambient air quality data, but there are variations in the type of data available. In most cases, monthly or annual averaged data are posted (most often as pdf files) on the SPCB websites. It must be noted that some states (e.g., Telangana, Tamil Nadu, Uttarakhand, Uttar Pradesh, and Maharashtra) have good data availability on their websites (e.g., Uttarakhand- <http://ueppcb.uk.gov.in/pages/display/95-air-quality-data>; Maharashtra- <http://mpcb.gov.in/envtdata/envtair.php>). Third-party organizations including several media outlets have also created data dashboards that allow the public to access the data, and the raw data from the CAAQM stations and the US Embassy/Consulate stations are archived by OpenAQ. Data from SAFAR and MAPAN networks are not available in the public domain currently.

Ambient PM₁₀ concentrations across India

Data collected as part of the NAMP network are released monthly or annually, while the data from the CAAQM stations is accessible in near real-time (<https://app.cpcbcr.com/ccr/#/caaqm-dashboard/caaqm-landing>). It is important to note that no metadata or QA/QC data are made available, either on the website or in the annual reports. Additionally,

for CAAQM stations, data is often missing for long periods of time often with no description for the reasons behind missing data. In terms of application, data collected as part of the NAMP monitoring network is used for reporting annual trends by the CPCB. Some trend analysis (Kandlikar 2007; Guttikunda and Gurjar 2012; Gurjar et al. 2016) and epidemiology studies (Balakrishnan et al. 2013; Maji et al. 2017) have utilized the data, but there has been limited application of the data elsewhere. Recently, Pande et al. (2018) utilized the PM₁₀ data from NAMP stations to correct satellite data-derived estimates (based on AOD) of PM₁₀ at the country level.

For this study, annual average PM₁₀ data was retrieved from the NAMP stations from 2004 through 2015 from the national data portal and the reports on the CPCB website. Monitoring of PM_{2.5} commenced only after the introduction of the standard in 2009, and as a result, the data availability prior to this is comparatively limited. Although NAMP data was collected before 2004, national-level data was not available. Measurements presented here are from 27 states and 5 UTs at 630 unique monitoring locations as of 2015 (see Table 2). A large number of sites exceed the annual PM₁₀ standard (60 µg/m³), particularly in the northern and central parts of the country, and in some cases, the concentrations were up to six times higher than the standard.

Only 11 of the 4789 (0.23%) unique PM₁₀ annual average measurements meet the annual WHO Air Quality Guideline (20 µg/m³) though 895 measurements (19%) met the annual Indian NAAQS (60 µg/m³) (see Table 3). Over the 12-year period, only one site (Tekka Bench Ridge, Shimla, Himachal Pradesh) met the WHO AQ guideline in two separate years (2004 and 2005). Two hundred forty-six unique sites, mostly located in southern and eastern India (see SI Fig. S2), met the Indian NAAQS in at least 1 year over the assessment period. On the other hand, five sites (two in Chennai (Tamil Nadu) and one each in Madurai (Tamil Nadu), Shillong (Meghalaya), and Mysore (Karnataka)) met the annual Indian standard each of the 12 years that data is available.

A summary of annual average PM₁₀ concentrations shows significant variations across states, with higher concentrations in the northern part of the country. There is little evidence of a PM trend nationally. Over this time, the average number of stations in a state/UT has gone up from 8 to 19, while the PM₁₀ concentration has remained more or less constant (Fig. 1). Further, there were no notable trends within individual states; it is difficult to assess state level trends as there are

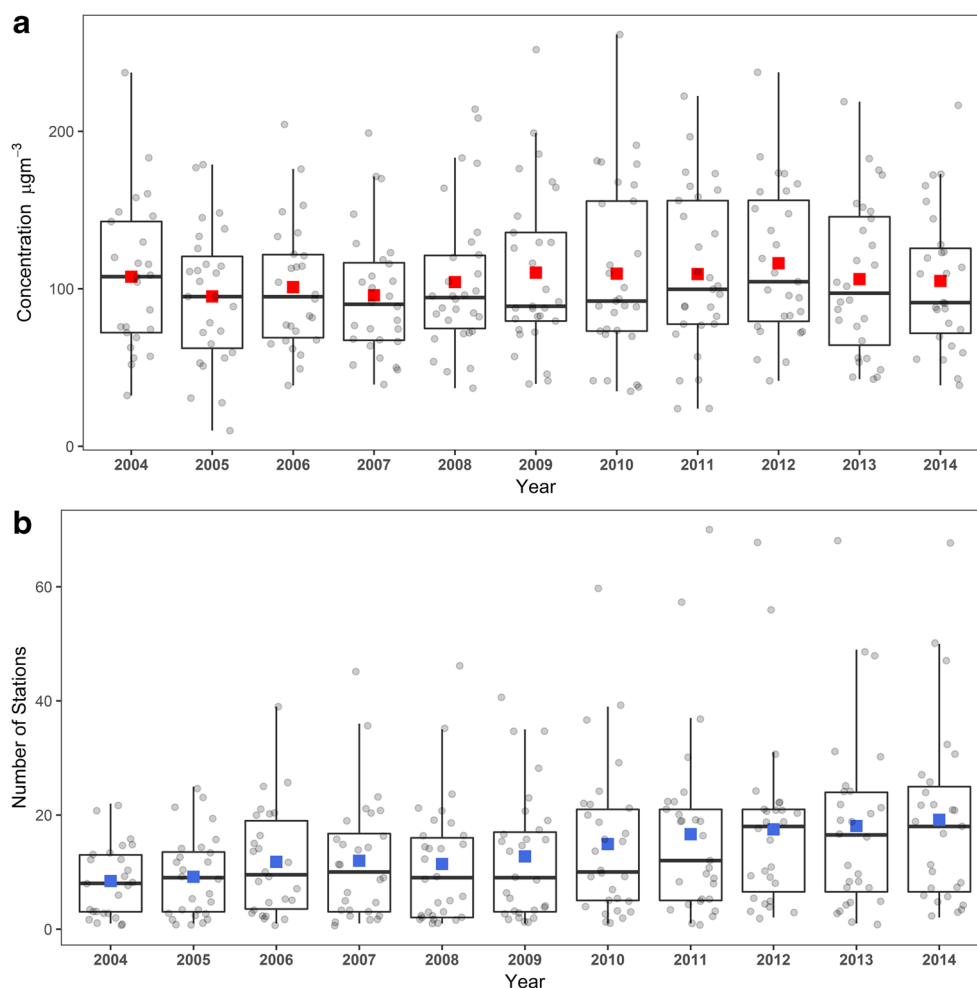
inconsistencies with monitor distribution (i.e., number of monitoring stations and location of monitors). However, an assessment of PM₁₀ monitoring data shows an increasing trend for PM₁₀ concentrations across the country in the last few years (Yang et al. 2018). Additionally, between 1998 and 2014, PM_{2.5} concentrations have steadily increased, and the number of districts (per 2011 Census) that exceed the annual average PM_{2.5} standard of 40 µg/m³ increased several fold (van Donkelaar et al. 2015). Further, visibility data (a proxy for air pollution levels) from Indian cities shows an increase in bad visibility days in the last decade (Hu et al. 2017).

Annual average PM₁₀ concentrations were higher in Northern India (namely Rajasthan, Uttar Pradesh, Delhi, Jharkhand, and Punjab) compared to the Southern states (Fig. 2), consistent with other measurement, modeling, and satellite findings (Nair et al. 2007; Dey et al. 2012; Saikawa et al. 2017; Shi et al. 2018). Several studies have also reported on the winter haze in the Indo-Gangetic plains in Northern India (Gautam et al. 2007; Ram et al. 2016). The lowest annual average PM₁₀ concentration was 9 µg/m³ at Tekka Bench Ridge (Shimla, Himachal Pradesh) in 2004 while the highest reported annual average PM₁₀ concentration at any sites was at Sarora (Raipur, Chattisgarh) in 2011 with the annual concentration of 379 µg/m³ (annual average varied between 177 and 379 µg/m³ across sampling years, with an average of 273 µg/m³). The Tekka Bench Ridge station has been continuously active since 2004 and the annual average concentrations have ranged between 40 and 62 µg/m³ (average across the years is 42 µg/m³) except for 2004 (9 µg/m³) and 2005 (17 µg/m³). Overall, the highest annual average concentration averaged across all monitors in the state/UT in any year was 261 µg/m³ in Delhi (number of monitoring stations = 9) in 2010. Since 2008, Delhi has consistently been the most polluted state/UT although in the years prior, the northern state of Punjab recorded the highest PM₁₀ levels. Several studies have reported high average concentrations for both PM₁₀ and PM_{2.5} in Delhi (Chowdhury et al. 2007; Guttikunda and Goel 2013; Pant et al. 2015a, b; Tiwari et al. 2015; Sharma and Dikshit 2016; Maji et al. 2017; Yang et al. 2018). It is important to note that not all sources are the same for both PM₁₀ and PM_{2.5}, and it is important to consider the data with caution. In the Indian context, dust is a major source for PM₁₀, and there is strong seasonality in the concentrations (Pande et al. 2018; Yang et al. 2018). Studies in India have also indicated that the average PM_{2.5}/PM₁₀ ratio is between 0.5 and 0.8 (Kothai et al. 2011; Tiwari et al. 2015).

Table 3 Number of annual average PM₁₀ measurements attaining the Indian NAAQS (60 µg/m³) and WHO Guideline (20 µg/m³)

	2015	2014	2013	2012	2011	2010	2009	2008	2007	2006	2005	2004	Total
WHO Air Quality Guideline	0	0	0	0	3	0	0	0	0	0	6	2	11
Indian NAAQS	107	107	107	78	86	79	53	53	61	62	62	40	895
Total Sites	555	517	506	472	482	432	369	342	335	306	247	210	4789

Fig. 1 Average PM₁₀ concentrations (panel A) and monitoring stations (panel B) based on NAMP data from 2004 to 2014



Observations from this dataset also align with available information on PM sources characteristics for the country

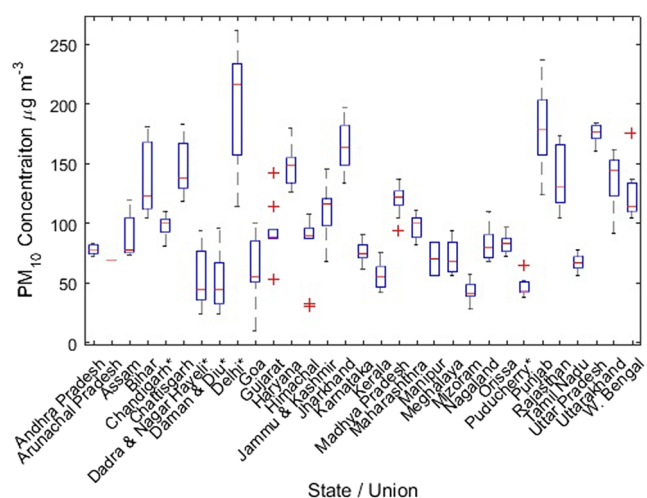


Fig. 2 Annual average PM₁₀ concentrations at state/UT-level based on NAMP data from 2004 to 2015. [Note: Locations of monitors (industrial vs residential and other sites) tend to vary significantly from state to state. This figure should only be used for a general understanding of average pollution levels in urban India]

(dominant sources being residential biomass burning, dust, fossil fuel and biomass burning, and waste burning (including crop residue)) (Pant and Harrison 2012; Guttikunda et al. 2014; Wiedinmyer et al. 2014; Pandey et al. 2014; Sadavarte and Venkataraman 2014; Karagulian et al. 2015; Gargava and Rajagopalan 2015; Gurjar et al. 2016). In a recent global modeling assessment for energy-related sources of PM₁₀, residential and industrial sectors were reported to be the largest contributors followed by power and transportation for India (Winijkul et al. 2015), and another study reported residential biomass fuel emissions to be the biggest contributor to ambient PM_{2.5} levels across India followed by combustion of agricultural residue (particularly in Northern India where in situ waste burning is a common practice) (Venkataraman et al. 2018). Non-exhaust emissions, including resuspended dust and brake, and tire emissions can also play a significant role in PM₁₀ emissions (Pant et al. 2015a, b; Nagpure et al. 2016).

Year-on-year trend analysis was not conducted; if absolute changes in PM₁₀ concentrations are considered, there is a wide variation in trends across states. Overall, the number of monitoring stations has changed (in most cases, there has been an increase in the number of monitoring stations) over time, and

it is expected that changes in demography and socio-economic patterns would have impacted the emission patterns (Fig. 3). However, it is hard to make significant conclusions regarding pollutant concentrations from these datasets since there has been a shift in the type of stations setup under NAMP during the study period. While detailed information is not available, there has been an increase in the number of residential/urban monitoring stations in the last decade.

There are limitations and uncertainties associated with this dataset that have not been explicitly defined for each station; all measurements are gravimetric, and while there is a protocol for sample collection and analysis, in the absence of QA/QC data or information on laboratory inter-comparisons, it is hard to interpret the quality of the data across the country. Further, most measurements occur over 24 h (8-h period) two to three times a week, presumably during the day. This likely underestimates the true PM_{10} concentration as nighttime concentrations often exceed daytime concentrations, and the 8-h

sampling period does not capture the temporal variability of the pollutant.

Aerosol optical depth (AOD) measurements made on-board satellites offer another opportunity for estimation of PM concentrations. Chowdhury and Dey (2016) estimated $PM_{2.5}$ concentrations at the district level in India using daily columnar AOD data from Multiangle Imaging SpectroRadiometer (MISR) and associated modeling exercises that combines the AOD data with emission inventories and ground monitoring data using chemical transport models. Based on this dataset, Kinnaur (Himachal Pradesh, $3.7 \mu\text{g}/\text{m}^3$) had the lowest annual average $PM_{2.5}$ concentration while the highest concentration was observed in Delhi ($148 \mu\text{g}/\text{m}^3$). These observations are in broad agreement with the reported trends for PM_{10} data from the NAMP network as discussed above.

Station density and coverage

The NAMP network currently has 700 stations and the network has come a long way since 1984 when it was first launched with seven stations in Northern India. The CPCB has provided detailed siting criteria for monitoring stations and included considerations such as size of the area, population, and pollutant sources (CPCB 2003). The guidelines also refer to a greater need for making measurements near traffic (diesel vehicles) and industries since these are major sources of PM.

However, for a country with a population of ~ 1.2 billion, this amounts to one pollution monitoring station for every ~ 2 million people. Given the spatial heterogeneity of pollutant concentrations in India, in part due to mixed land-use (Tiwari 2002), the data should be improved (e.g., better coverage, clear metadata, and QA/QC) to better support pragmatic regulatory assessment or epidemiology studies. There is a wide variation in the number of monitoring stations across states often irrespective of the PM levels or population density (Fig. 4). Additionally, in several states including Manipur and Arunachal Pradesh in North-eastern India, station density is very poor and only 2–5 years of data is currently available. For comparison, there are 87 monitoring stations for PM_{10} and 32 for $PM_{2.5}$ in the Greater London region, UK (Mittal and Fuller 2017), a city of 9 million. To better characterize air pollution in Indian cities, there is a need to introduce more monitoring stations, especially in densely populated urban centers. As per the review of CPCB (IIM 2010), a total of 3000 stations were expected to be established in Class I (population of one million or more) and II (population of 50,000 to 99,999) cities and towns by 2022, and 100 CAAQM stations by 2012. However, there are currently 703 stations across the country, and 130 + CAAQM stations are operational as of September 2018.

It is also important to consider that this dataset largely represents the air quality for urban and peri-urban India, since the NAMP network does not include monitoring stations in rural areas (Balakrishnan et al. 2014). Given the significant

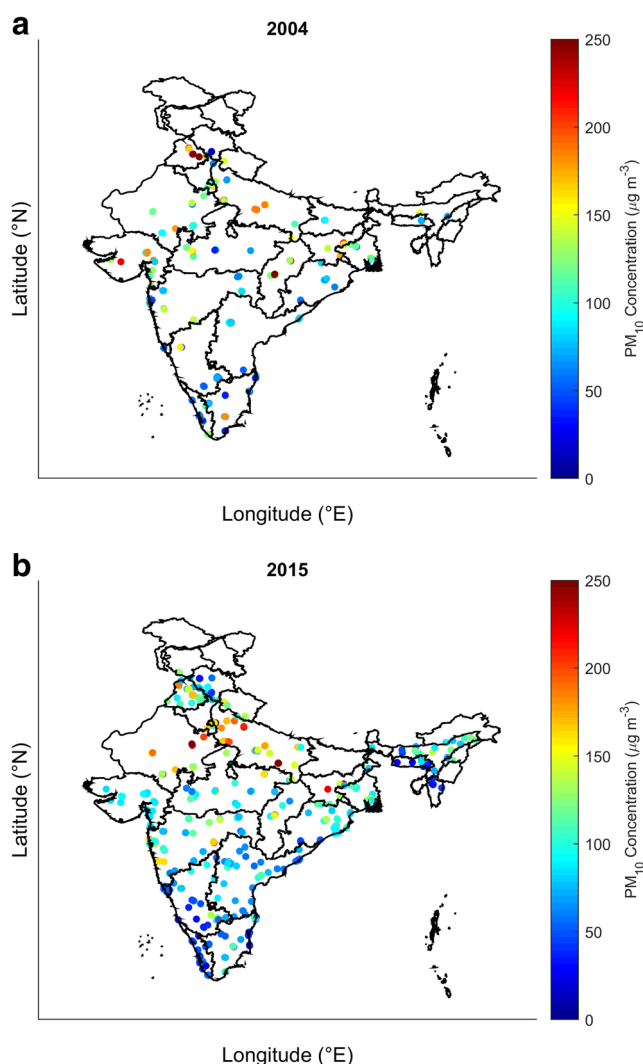


Fig. 3 Variability in PM_{10} concentrations at NAMP stations in **a** 2004 and **b** 2015. [Note the higher concentrations in the Indo-Gangetic Plains, i.e., north India]

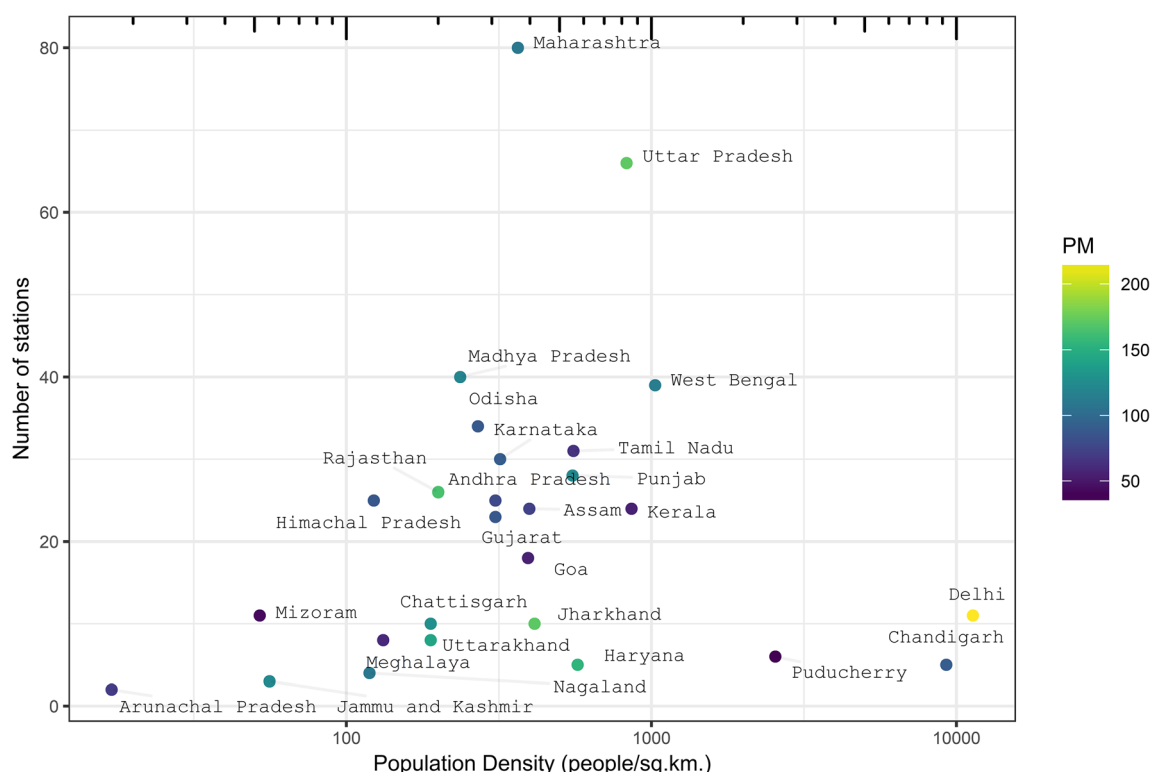


Fig. 4 Average population density and average PM_{10} concentrations (in $\mu g/m^3$) across states and the corresponding number of current NAMP monitoring stations [as of 2017] (following states/UTs are not included:

Dadra and Nagar Haveli, Daman and Diu, Tripura, Manipur, Sikkim, Bihar, Telangana, Lakshadweep, Andaman and Nicobar Islands)

human health burden associated with exposure to household air pollution, much of which occurs in rural areas, lack of data from rural areas could in fact be contributing to exposure misclassification in large-scale modeling and epidemiological studies. However, several new research projects are focusing on generating integrated ambient and indoor data on PM in rural parts of the country (Balakrishnan et al. 2015; Tonne et al. 2017).

Finally, from the perspective of air quality monitoring and assessment, it is important to establish regional monitoring stations for measurement of particle concentrations and compositional analysis at background levels. Data from such stations can be useful in assessment of long-term trends as well as in source apportionment analyses, particularly with reference to understanding the contribution of regional and local sources. Additionally, such stations can provide valuable data on improving our understanding of regional transport of aerosols. Currently, there are no regional monitoring stations within the regulatory (NAMP) network.

Data quality

A majority of the air pollution monitoring stations across the country are operated manually and it is unclear how the 8-h samples are used for regulatory purposes of assessing whether

locations are meeting the 24-h NAAQS, since an 8-h sample only captures a snapshot of the actual levels. Further, it is likely that singular pollution episodes are either not accounted for, or have an undue influence on the measurements resulting in under- or over-reporting of PM_{10} concentrations. Manual monitoring also results in a delay in data collection, transmission, and availability, although the increasing number of CAAQMS are allowing data to be streamed to the CPCB website in near real-time overcoming some of the aforementioned concerns. A case in point is Delhi, the capital city, which has the most extensive AQ monitoring network in the country. Between 2004 and 2015, data capture for PM_{10} across ten sites (assuming 104 observations/year) varied between 12 and 74% (Fig. 5).

A rigorous QA/QC procedure is vital to ensure that the results are comparable, reliable, and reproducible. The measurement and reporting protocols need to be consistent over time, and any biases due to instrument drift need to be accounted for in the analysis. A number of documents refer to QA/QC procedures for the NAMP monitoring stations (CPCB 2003; CPCB 2011); however, there is no information on data ratification and quality control for the NAMP monitoring sites, which suggests these data should be interpreted with caution. There is a Pollution Assessment, Monitoring and Survey (PAMS) program, but no information on data QA/QC

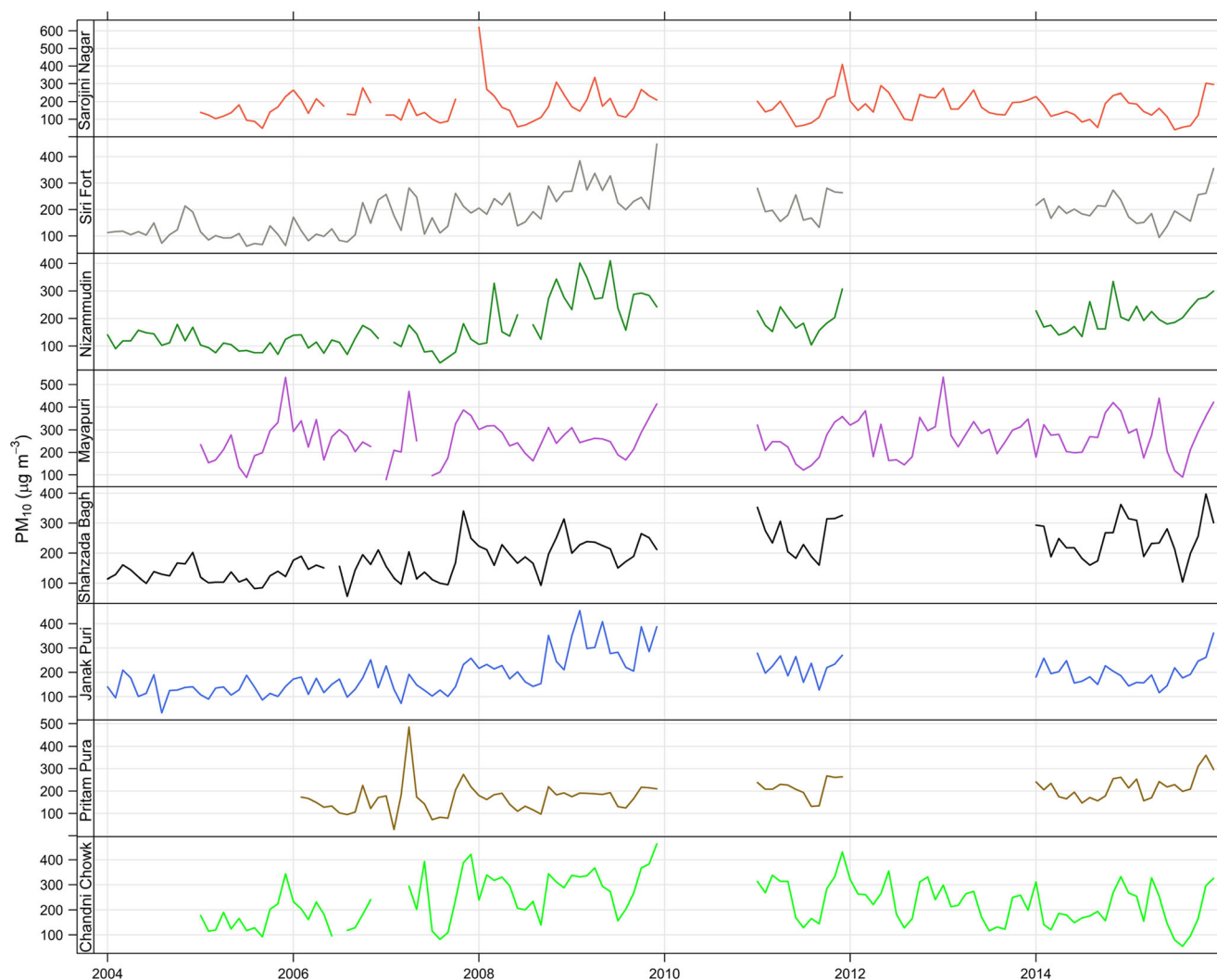


Fig. 5 Monthly average PM_{10} concentration across ten stations in Delhi based on data retrieved for 2004 through 2015 [based on manual monitoring data reported by the CPCB]

is available publicly. In case of SAFAR, a detailed QA/QC protocol is listed on the website, but neither the air quality data nor the QA/QC is publicly available. Similarly, there is no publicly accessible information for the MAPAN network.

Traceable quality assurance requires clear and reproducible procedures which are implemented with scientific rigor and need trained technicians and scientists to operate these networks. In the Indian scenario, the issue of QA/QC is also tied to the technical capacity at the central and station pollution boards, and the zonal offices and laboratories. This includes both the personnel and the infrastructure available to them for sampling and analysis. The CPCB review (IIM 2010) also alluded to the issue of lack of technical capacity and limited opportunities for capacity building. Further, funding available to the central and state pollution control boards is often limited and does not account for resources required for research and analysis, thereby limiting rigorous data analysis and its direct application in policymaking.

Future outlook for air quality data in India

Air pollution remains a leading environmental concern in India, and a review of current monitoring and data management strategies indicates lack of consistency across different networks (e.g., differences in methodologies for estimation of AQI). Given the very high levels of PM in many parts of the country, India has also been in the international spotlight with several cities listed among the worst in terms of air quality, and increasingly, there is public pressure for action on air pollution. Lack of centralized databases on air quality has rendered it difficult to utilize available data for long-term trends analysis studies, and in cases where the data is used, there is significant uncertainty associated with final observations or outcomes. Recent efforts such as open-access availability of long-term datasets from NAMP stations is a welcome step and will undoubtedly spur and facilitate work on the topic. Significant improvements have been made with respect to

air quality monitoring in India in the last two decades, and efforts are underway to further strengthen the national monitoring program, with a focus on setting up CAAQMS across major cities. Given the significant health burden associated with exposure to PM in India, strengthening the regulatory air quality monitoring networks in India would provide greater support for both air quality management, higher order scientific inquiry, and epidemiological analysis activities. Here, we provide recommendations to further strengthen India's air quality monitoring networks:

- [1] *Improvement in data quality and data access:* Third-party data evaluation, annual instrument inter-comparisons and calibration can be used for data assessment. In the UK, for example, all regulatory monitoring data collected as part of the Automatic Urban and Rural Network (AURN) is ratified through Ricardo AEA, an independent agency whereas in the USA, state and local monitoring agencies follow specifically developed standard operating procedures [SOPs] (often in consultation with external contractors such as Sonoma Technology or RTI International). The National Physical Laboratory of India (NPL) has been leading the charge in gas and PM calibrations (<http://www.nplindia.in/gas-metrology>). In addition, it is important to collect and release metadata (i.e., descriptive information about datasets) to ensure better cataloging and context-relevant usage of data. In addition, information about the performance of the monitoring networks through key metrics such as annual data capture rate and instrument calibration and performance evaluation should be archived and released.
- [2] *Harmonized approaches for sampling and data analysis:* Appropriate siting of AQ monitoring stations can help meet the regulatory requirements of AQ monitoring and can also be leveraged for exposure and health assessment studies. Thus, it is crucial to setup monitoring stations based on where they are needed, and not merely where they can be conveniently located. It would be useful to create a national guidance document on siting of AQ stations across a range of environments including urban (roadside, industrial, commercial, residential), rural, and regional monitoring areas. Regional monitoring stations to measure background air pollution levels can be particularly helpful in determining the contribution of regional transport of aerosols. Several studies have reported significant contributions from non-local sources at the city as well regional level (Dey and Di Girolamo 2010). Data generated through the wide network of monitoring programs should also be utilized actively in designing strategies for pollution control, and for measuring the impact of specific interventions.

One point of consideration for new monitoring sites is the migration of people from rural to urban areas and an

increase in the in situ urban populations in India (Bhagat 2017). At the same time, recent trends indicate that the net rural to urban migration constitute only a third of the total increase in urban populations (Bhagat 2017). Dey et al. (2012) reported no correlation between annual PM_{2.5} (based on satellite retrieval) and population size but changes in the cities' design and infrastructure coupled with changes in demographics are likely to impact both pollution sources and exposures, and consequently, the health impact estimates. As new monitoring stations are planned, such demographic changes can help to make the monitoring networks representative.

- [3] *Use of hybrid monitoring networks:* Low-cost sensors offer an opportunity to generate high-resolution data at a lower cost, and with fewer deployment and access limitations (Snyder et al. 2013). A number of community projects have been launched worldwide for crowd-funded air pollution measurements, and while such sensors can be useful in designing citizen science projects and generating novel data, there are still a number of uncertainties associated with the accuracy of measurements using low-cost sensors (Lewis and Edwards 2016; Clements et al. 2017). So far, such monitors have not been proven to provide long-term, accurate data without systematic calibration (Lewis and Edwards 2016; Rai et al. 2017). Efforts are underway to improve precision among such sensors, and latest analyses are supporting the case for deployment of well-designed low-cost sensors for measurement of air pollution at the city level. If designed carefully, such networks can provide valuable data on spatial variability of pollutants and help in identification of hyperlocal pollution hotspots. Additionally, such instruments can be used as indicative instruments to define and design more efficient regulatory monitoring networks.

In India, several independent low-cost sensor-based AQ networks have been launched in recent years, and such networks have been instrumental in improving public awareness. However, in the absence of reliable calibration, and other QA/QC, it is unlikely that these data can be used for research or regulatory applications in the near future.

- [4] *Utilizing alternative approaches to fill data gaps:* One avenue for improving our understanding of spatial and temporal patterns of PM is the use of satellite data. Data on aerosol optical depth (AOD) is typically collected via satellite overpass measurements (e.g., MODIS- <https://modis.gsfc.nasa.gov/>) and can be used for AQ applications such as forecasting, tracking pollution sources, and plumes, and as input/evaluation for AQ models (Duncan et al. 2014). Several recent studies have reported PM_{2.5} concentration estimates based on satellite AOD retrieval and subsequent modeling using chemical transport models (CTMs) (van Donkelaar et al. 2010;

Dey et al. 2012; Brauer et al. 2015), and have contributed in improving our understanding of global pollution patterns, especially in areas where ground monitoring is not conducted, or historical data is not available. There are still certain limitations, including inadequate bias-correction based on local data, obtaining surface level measurements (since AOD is a columnar measurement), and limited datasets (data retrieval is only possible on clear sky days). However, current results indicate that satellite data can be very useful in generating annual estimates for PM_{2.5}, especially in areas with limited ground monitoring, both for long-term trend analysis, and for health impact assessments, but not for hour by hour or day to day measurements. MISR observations have additional information on PM physical properties including aerosol size and shape. Additional satellite observations of gas-phase species, particularly PM precursors (e.g., HCHO (formaldehyde), NO₂, and SO₂), can provide spatio-temporal information that can be related to PM levels and sources. A recent analysis by Pande et al. (2018) utilized AOD datasets to estimate PM₁₀ concentrations and all-cause mortality associated with PM₁₀ exposures at the national level.

- [5] *Air Quality Forecasting and Early Warning Systems:* Given the high frequency of pollution episodes, it is important to have early warning systems which can be used for alerting the public and broadcasting public health advisories in urban and rural areas. In addition to generating forecasts, designing public communications programs to spread this information along with guidance on what the public should (or should not do) through apps, social media, and mass media (e.g., radio, TV and print) in local languages would be useful.
- SAFAR has been instrumental in providing advance information about the AQ levels in four cities, but similar systems based on high-quality data are needed across the country. Additionally, it is important to monitor data quality, and reliability of forecasts in the long term, which is currently lacking.
 - In 2017, Urban Emissions, a private organization, launched an independent AQ forecasting system where modeled hourly average concentration and a 24-h moving average concentrations are simulated for the next 72 h, using the Weather Research and Forecasting (WRF) meteorological model and the GFS meteorological fields and the CAMx chemical transport modeling system (Skamarock et al. 2008). The data are available in the form of maps on an open-access portal (<http://www.indiaairquality.info>).
- [6] *Increase in expenditure and capacity building efforts:* To further improve the country's AQ monitoring network,

increased funding can help extend data collection. Such data should not be limited to PM mass, but include speciation to help quantify the impacts of specific sources and can be immensely useful not only for regulatory monitoring, but also for detailed health impact studies, source apportionment analyses, and assessment of policy interventions. Similar recommendations have also been made elsewhere (Doraiswamy et al. 2017). For example, India is set to introduce Bharat Stage VI fuel standards (comparable to Euro VI) by 2020, and this is expected to result in a decline in PM levels. With speciation data, it will be much easier to characterize changes in the emissions' profile after this national policy is introduced. At a local level, speciation data, when collected over a long term, can be helpful in measuring the impact of specific policy interventions (e.g., odd-even vehicle policy in New Delhi) in terms of reduction of specific PM constituents.

Cities with a population of at least one million currently account for ~30% of the country's population, and as per CPCB plans, the goal is to install CAAQMS (including all criteria pollutants and meteorological parameters) in all state capitals and cities with population of one million or more (see the "National Air Quality Monitoring Programme" section). A number of these cities are currently undertaking large infrastructure projects under the SMART City initiative or the Urban Renewal Mission and have received federal aid. Given the significant health burden associated with exposure to ambient air pollution, setting up, and operating CAAQM stations is a useful investment to get accurate, reliable, and real-time information on air quality. Using CPCB siting criteria, an average city of one million plus residents requires ~25 CAAQM stations, and if this number is extrapolated across 60 cities, a total of ~1500 stations would be required (CPCB 2003). The average cost of a CAAQM station is ~INR one crore (~USD 0.15 million) with ~10% for annual maintenance costs (estimates based on figures reported for a station to be commissioned in 2017 by the CPCB). This would require an initial investment in the order of INR 3000 crores (~USD 0.5 billion) due to capital and operational costs (INR one crore per site for installation and INR one crore per site for maintenance for 10 years). On top of this, costs associated with infrastructure, personnel, and training need to be accounted for; and this can be estimated as an additional INR 3000 crore (~USD 0.5 billion); to cover other miscellaneous costs, an additional 50% is added to this resulting in a total of INR 7500 crores. These estimates indicate that the average cost of running the CAAQM station network in each city over a 10-year period would amount to ~INR 12.5 crores per year (~USD 2 million/year) (see Table S2 for an estimate of monitoring stations across Indian states). In comparison, the cost for the metro train infrastructure in major cities ranges

between INR 16,000 and 100,000 crores INR (~USD 2.5–15 billion). It is important to note that these estimates are based on a broad calculation and are subject to change over time.

Finally, increased opportunities for collaboration between the central and state pollution control boards, and local academic and research institutions, could also benefit pollution mitigation efforts. Creating a system where research and policymaking are better integrated and promoting research and development at the pollution control boards can help fill the gaps.

Funding information This work was financially supported by NSF SRN# 1444745 & NSF PIRE Grant #1243535. Cesunica E. Ivey at UC-Riverside and James Hite at Georgia Tech assisted with data oversight. PM₁₀ dataset used in this analysis is available via e-mail (pallavipnt@gmail.com).

Compliance with ethical standards

Conflicts of interest Dr. Sarath Guttikunda is one of the founders of Urban Emissions, organization releasing air quality forecasts for Indian districts on an open-access platform.

References

- Balakrishnan K, Ganguli B, Ghosh S, Sambandam S, Roy S, Chatterjee A (2013) A spatially disaggregated time-series analysis of the short-term effects of particulate matter exposure on mortality in Chennai, India. *Air Qual Atmos Health* 6:111–121
- Balakrishnan K, Cohen A, Smith K (2014) Addressing the burden of disease attributable to air pollution in India: the need to integrate across household and ambient air pollution exposures. *Environ Health Perspect* 122:A6–A7
- Balakrishnan K, Sambandam S, Ramaswamy P, Ghosh S, Venkatesan V, Thangavel G, Mukhopadhyay K, Johnson P, Paul S, Puttaswamy N, Dhaliwal RS, Shukla DK, Team SRU-CAR (2015) Establishing integrated rural-urban cohorts to assess air pollution-related health effects in pregnant women, children and adults in southern India: an overview of objectives, design and methods in the Tamil Nadu air pollution and health effects (TAPHE) study. *BMJ Open* 5:e008090
- Beig G, Chate DM, Sahu SK, Parkhi NS, Srinivas R, Ali K, Ghude SD, Yadav S, Trimbake HK (2015) System of Air Quality Forecasting and Research (SAFAR - India). GAW Report No 217. <https://www.wmo.int/pages/prog/arep/gaw/documents/GAWSymp2017P3Beig.pdf>. Accessed 12 Jan 2018. Migration and urban transition in India: implications for development. United Nations Expert Group Meeting on sustainable cities, human mobility and international migration
- Bhagat RB (2017), UN/POP/EGM/2017/3. <https://tinyurl.com/y82sb8zw>. Accessed 18 Sep 2018
- Brauer M, Freedman G, Frostad J, van Donkelaar A, Martin RV, Dentener F, Van Dingenen R, Estep K, Amini H, Apte JS, Balakrishnan K, Barregard L, Broday DM, Feigin V, Ghosh S, Hopke PK, Knibbs LD, Kokubo Y, Liu Y, Ma S, Morawska L, Texcalac Sangrador JL, Shaddick G, Anderson HR, Vos T, Forouzanfar MH, Burnett RT, Cohen A (2015) Ambient air pollution exposure estimation for the global burden of disease 2013. *Environ Sci Technol* 50(1):79–88
- Brook RD, Rajagopalan S, Pope CA, Brook JR, Bhatnagar A, Diez-Roux AV, Holguin F, Hong Y, Luepker RV, Mittleman MA, Peters A, Siscovick D, Smith SC, Whitsett L, Kaufman JD (2010) Particulate matter air pollution and cardiovascular disease. *Circulation* 121:2331–2378
- Chowdhury S, Dey S (2016) Cause-specific premature death from ambient PM_{2.5} exposure in India: estimate adjusted for baseline mortality. *Environ Int* 91:283–290
- Chowdhury Z, Zheng M, Schauer JJ, Sheesley RJ, Salmon LG, Cass GR, Russell AG (2007) Speciation of ambient fine organic carbon particles and source apportionment of PM_{2.5} in Indian cities. *J Geophys Res Atmos* 112
- Clements AL, Griswold WG, Abhijit RS, Johnston JE, Herting MM, Thorson J, Collier-Oxandale A, Hannigan M (2017) Low-cost air quality monitoring tools: from research to practice (a workshop summary). *Sensors* 17(11):2478
- Cohen AJ, Brauer M, Burnett R, Anderson HR, Frostad J, Estep K, Balakrishnan K, Brunekreef B, Dandona L, Dandona R, Feigin V, Freedman G, Hubbell B, Jobling A, Kan H, Knibbs L, Liu Y, Martin R, Morawska L, Pope CA, Shin H, Straif K, Shaddick G, Thomas M, van Dingenen R, van Donkelaar A, Vos T, Murray CJL, Forouzanfar MH (2017) Estimates and 25-year trends of the global burden of disease attributable to ambient air pollution: an analysis of data from the global burden of diseases study 2015. *Lancet* 389:1907–1918
- CPCB (2003) Guidelines for ambient air quality monitoring; series: NAAQMS/ ... /2003-04. Central Pollution Control Board. <https://tinyurl.com/y8r54a3z>. Accessed 12 Nov 2017
- CPCB (2011) Guidelines for the measurement of ambient air pollutants volume-II. Central Pollution Control Board. <https://tinyurl.com/yajs4h8j>. Accessed 12 Nov 2017
- CPCB (2014) National Air Quality Index. Control of urban pollution series CUPS 82/2014–15. <https://tinyurl.com/y78slqnq>. Accessed 24 Jan 2018
- Dey S, Di Girolamo L (2010) A climatology of aerosol optical and microphysical properties over the Indian subcontinent from nine years (2000–2008) of Multiangle Imaging SpectroRadiometer (MISR) data. *J Geophys Res* 115:D15204
- Dey S, Di Girolamo L, van Donkelaar A, Tripathi SN, Gupta T, Mohan M (2012) Variability of outdoor fine particulate (PM_{2.5}) concentration in the Indian subcontinent: a remote sensing approach. *Remote Sens Environ* 127:153–161
- Dockery DW, Pope CA, Xu X, Spengler JD, Ware JH, Fay ME, Ferris BG, Speizer FE (1993) An association between air pollution and mortality in six U.S. cities. *N Engl J Med* 329:1753–1759
- Dominici F, Peng RD, Bell ML, Pham L, McDermott A, Zeger SL, Samet JM (2006) Fine particulate air pollution and hospital admission for cardiovascular and respiratory diseases. *JAMA* 295:1127–1134
- Doraiswamy P, Jayanty RKM, Rao ST, Mohan M, Dey S, Ganguly D et al. (2017) Combating air pollution in North India - the path forward. *Environmental Manager (EM)* April 2017. <http://pubs.awma.org/flip/EM-Apr-2017/doraiswamy.pdf>. Accessed 20 Jan 2018
- Duncan BN, Prados AI, Lamsal LN, Liu Y, Streets DG, Gupta P, Hilsenrath E, Kahn RA, Nielsen JE, Beyersdorf AJ, Burton SP, Fiore AM, Fishman J, Henze DK, Hostetler CA, Krotkov NA, Lee P, Lin M, Pawson S, Pfister G, Pickering KE, Pierce RB, Yoshida Y, Ziemba LD (2014) Satellite data of atmospheric pollution for U.S. air quality applications: examples of applications, summary of data end-user resources, answers to FAQs, and common mistakes to avoid. *Atmos Environ* 94:647–662
- Gargava P, Rajagopalan V (2015) Source apportionment studies in six Indian cities: drawing broad inferences for urban PM₁₀ reductions. *Air Qual Atmos Health* (5):471–481
- Gautam R, Hsu NC, Kafatos M, Tsay S (2007) Influences of winter haze on fog/low cloud over the Indo-Gangetic Plains. *J Geophys Res Atmos* 112
- Gordon T, Balakrishnan K, Dey S, Rajagopalan S, Thornburg J, Thurston G, Agrawal A, Collman G, Guleria R, Limaye S, Salvi S, Kilaru V, Nadadur S (2018) Air pollution health research priorities for India:

- perspectives of the Indo-U.S. Communities of Researchers. *Environ Int* 119:100–108
- Greenstone M, Nilekani J, Pande R, Ryan N, Sudarshan A, Sugathan A (2015) Lower pollution, longer lives: Life expectancy gains if India reduced particulate matter pollution. *Econ Polit Wkly* L 40–46
- Gurjar BR, Ravindra K, Nagpure AS (2016) Air pollution trends over Indian megacities and their local-to-global implications. *Atmos Environ* 142:475–495
- Guttikunda SK, Goel R (2013) Health impacts of particulate pollution in a megacity—Delhi, India. *Environ Dev* 6:8–20
- Guttikunda SK, Gurjar BR (2012) Role of meteorology in seasonality of air pollution in megacity Delhi, India. *Environ Monit Assess* 184:3199–3211
- Guttikunda SK, Goel R, Pant P (2014) Nature of air pollution, emission sources, and management in the Indian cities. *Atmos Environ* 95:501–510
- HEI (2011) Public Health and Air Pollution in Asia (PAPA): coordinated studies of short-term exposure to air pollution and daily mortality in two Indian cities. Research Report Number 157. <https://www.healtheffects.org/system/files/India-157-IR.pdf> Accessed 23 Nov 2017
- Hu Y, Yao L, Cheng Z, Wang Y (2017) Long-term atmospheric visibility trends in megacities of China, India and the United States. *Environ Res* 159:466–473
- IIM (2010) Evaluation of Central Pollution Control Board (CPCB). IIM Lucknow. <http://cpcbncin/cpcbld/IIMLkopdf>. Accessed 15 Nov 2017
- Kandlikar M (2007) Air pollution at a hotspot location in Delhi: detecting trends, seasonal cycles and oscillations. *Atmos Environ* 41:5934–5947
- Karagulian F, Belis CA, Dora CFC, Prüss-Ustün AM, Bonjour S, Adair-Rohani H, Amann M (2015) Contributions to cities' ambient particulate matter (PM): a systematic review of local source contributions at global level. *Atmos Environ* 120:475–483
- Kothai P, Saradhi IV, Pandit GG, Markwitz A, Puranik VD (2011) Chemical characterization and source identification of particulate matter at an urban site of Navi Mumbai, India. *Aerosol Air Qual Res* 11:560–569
- Levinson A (2012) Valuing public goods using happiness data: the case of air quality. *J Public Econ* 96:869–880
- Lewis A, Edwards P (2016) Validate personal air-pollution sensors. *Nature* 535:29–31
- Maji S, Ahmed S, Siddiqui WA, Ghosh S (2017) Short term effects of criteria air pollutants on daily mortality in Delhi, India. *Atmos Environ* 150:210–219
- Mittal L, Fuller G (2017) London Air Quality Network, Summary Report 2016, King's College London. https://www.londonair.org.uk/london/reports/2016_LAQN_Summary_Report.pdf. Accessed 12 Jan 2018
- Nagpure AS, Gurjar BR, Kumar V, Kumar P (2016) Estimation of exhaust and non-exhaust gaseous, particulate matter and air toxics emissions from on-road vehicles in Delhi. *Atmos Environ* 127:118–124
- Nair VS, Moorthy KK, Alappattu DP, Kunhikrishnan PK, George S, Nair PR, Babu SS, Abish B, Satheesh SK, Tripathi SN, Niranjana K, Madhavan BL, Srikant V, Dutt CBS, Badarinath KVS, Reddy RR (2007) Wintertime aerosol characteristics over the Indo-Gangetic Plain (IGP): impacts of local boundary layer processes and long-range transport. *J Geophys Res Atmos* 112
- Ostro BD, Hurley S, Lipsett MJ (1999) Air pollution and daily mortality in the Coachella Valley, California: a study of PM₁₀ dominated by coarse particles. *Environ Res* 81(3):231–238
- Pande P, Dey S, Chowdhury S, Choudhary P, Ghosh S, Srivastava P, Sengupta B (2018) Seasonal transition in PM₁₀ exposure and associated all-cause mortality risks in India. *Environ Sci Technol* 52(15):8756–8763
- Pandey A, Sadavarte P, Rao AB, Venkataraman C (2014) Trends in multi-pollutant emissions from a technology-linked inventory for India: II. Residential, agricultural and informal industry sectors. *Atmos Environ* 99:341–352
- Pant P, Harrison RM (2012) Critical review of receptor modelling for particulate matter: a case study of India. *Atmos Environ* 49:1–12
- Pant P, Baker SJ, Shukla A, Maikawa C, Godri Pollitt KJ, Harrison RM (2015a) The PM₁₀ fraction of road dust in the UK and India: characterization, source profiles and oxidative potential. *Sci Total Environ* 530–531:445–452
- Pant P, Shukla A, Kohl SD, Chow JC, Watson JG, Harrison RM (2015b) Characterization of ambient PM_{2.5} at a pollution hotspot in New Delhi, India and inference of sources. *Atmos Environ* 109:178–189
- Pant P, Guttikunda SK, Peltier RE (2016) Exposure to particulate matter in India: a synthesis of findings and future directions. *Environ Res* 147:480–496
- Pope CA, Dockery DW (2006) Health effects of fine particulate air pollution: lines that connect. *J Air Waste Manage Assoc* 56:709–742
- Rai AC, Kumar P, Pilla F, Skouloudis AN, Di Sabatino S, Ratti C, Yasar A, Rickerby D (2017) End-user perspective of low-cost sensors for outdoor air pollution monitoring. *Sci Total Environ* 607–608:691–705
- Ram K, Singh S, Sarin MM, Srivastava AK, Tripathi SN (2016) Variability in aerosol optical properties over an urban site, Kanpur, in the Indo-Gangetic Plain: a case study of haze and dust events. *Atmos Res* 174:52–61
- Ramanathan V, Carmichael G (2008) Global and regional climate changes due to black carbon. *Nat Geosci* 1:221–227
- Sadavarte P, Venkataraman C (2014) Trends in multi-pollutant emissions from a technology-linked inventory for India: I. industry and transport sectors. *Atmos Environ* 99:353–364
- Saikawa E, Trail M, Zhong M, Wu Q, Young CL, Janssens-Maenhout G, Klimont Z, Wagner F, Kurokawa J, Nagpure AS, Gurjar BR (2017) Uncertainties in emissions estimates of greenhouse gases and air pollutants in India and their impacts on regional air quality. *Environ Res Lett* 12:065002
- Shah ASV, Langrish JP, Nair H, McAllister DA, Hunter AL, Donaldson K, Newby DE, Mills NL (2013) Global association of air pollution and heart failure: a systematic review and meta-analysis. *Lancet* 382:1039–1048
- Sharma M, Dikshit O (2016) Comprehensive Study on Air Pollution and Green House Gases (GHGs) in Delhi. http://delhi.gov.in/DoIT/Environment/PDFs/Final_Report.pdf. Accessed 12 Dec 2017
- Shi Y, Matsunaga T, Yamaguchi Y, Li Z, Gu X, Chen X (2018) Long-term trends and spatial patterns of satellite-retrieved PM_{2.5} concentrations in South and Southeast Asia from 1999 to 2014. *Sci Total Environ* 615:177–186
- Singh A, Bloss WJ, Pope FD (2017) 60 years of UK visibility measurements: impact of meteorology and atmospheric pollutants on visibility. *Atmos Chem Phys* 17:2085–2101
- Skamarock WC, Klemp JB, Dudhia J, Gill DO, Barker DM, Wang W, Powers JG (2008) A Description of the Advanced Research WRF Version 3. NCAR Tech. Note NCAR/TN-475+STR
- Snyder EG, Watkins TH, Solomon PA, Thoma ED, Williams RW, Hagler GSW, Shelow D, Hindin DA, Kilaru VJ, Preuss PW (2013) The changing paradigm of air pollution monitoring. *Environ Sci Technol* 47:11369–11377
- Stieb DM, Chen L, Eshoul M, Judek S (2012) Ambient air pollution, birth weight and preterm birth: a systematic review and meta-analysis. *Environ Res* 117:100–111
- Thurston GD, Burnett RT, Turner MC, Shi Y, Krewski D, Lall R, Ito K, Jerrett M, Gapstur SM, Diver WR, Pope IC (2016) Ischemic heart disease mortality and long-term exposure to source-related components of U.S. fine particle air pollution. *Environ Health Perspect* 124:785–794

- Tiwari G (2002) Urban transport priorities: meeting the challenge of socio-economic diversity in cities, a case study of Delhi, India. *Cities* 19:95–103
- Tiwari S, Hopke PK, Pipal AS, Srivastava AK, Bisht DS, Tiwari S, Singh AK, Soni VK, Attri SK (2015) Intra-urban variability of particulate matter (PM_{2.5} and PM₁₀) and its relationship with optical properties of aerosols over Delhi, India. *Atmos Res* 166:223–232
- Tonne C, Salmon M, Sanchez M, Sreekanth V, Bhogadi S, Sambandam S, Balakrishnan K, Kinra S, Marshall JD (2017) Integrated assessment of exposure to PM_{2.5} in South India and its relation with cardiovascular risk: design of the CHAI observational cohort study. *Int J Hyg Environ Health* 220:1081–1088
- van Donkelaar A, Martin RV, Brauer M, Kahn R, Levy R, Verduzco C, Villeneuve PJ (2010) Global estimates of ambient fine particulate matter concentrations from satellite-based aerosol optical depth: development and application. *Environ Health Perspect* 118:847–855
- van Donkelaar A, Martin RV, Brauer M, Boys BL (2015) Use of satellite observations for long-term exposure assessment of global concentrations of fine particulate matter. *Environ Health Perspect* 123:135–143
- Venkataraman C, Brauer M, Tibrewal K, Sadavarte P, Ma Q, Cohen A, Chaliyakunnel S, Frostad J, Klimont Z, Martin RV, Millet DB, Phillip S, Walker K, Wang S (2018) Source influence on emission pathways and ambient PM_{2.5} pollution over India (2015–2050). *Atmos Chem Phys* 18:8017–8039
- Wiedinmyer C, Yokelson RJ, Gullett BK (2014) Global emissions of trace gases, particulate matter, and hazardous air pollutants from open burning of domestic waste. *Environ Sci Technol* 48:9523–9530
- Winijkul E, Yan F, Lu Z, Streets DG, Bond TC, Zhao Y (2015) Size-resolved global emission inventory of primary particulate matter from energy-related combustion sources. *Atmos Environ* 107:137–147
- Yang X, Jiang L, Zhao W, Xiong Q, Zhao W, Yan X (2018) Comparison of ground-based PM_{2.5} and PM₁₀ concentrations in China, India, and the US. *Int J Environ Res Public Health* 15:1382
- Zhang X, Zhang X, Chen X (2017) Happiness in the air: how does a dirty sky affect mental health and subjective well-being? *J Environ Econ Manag* 85:81–94