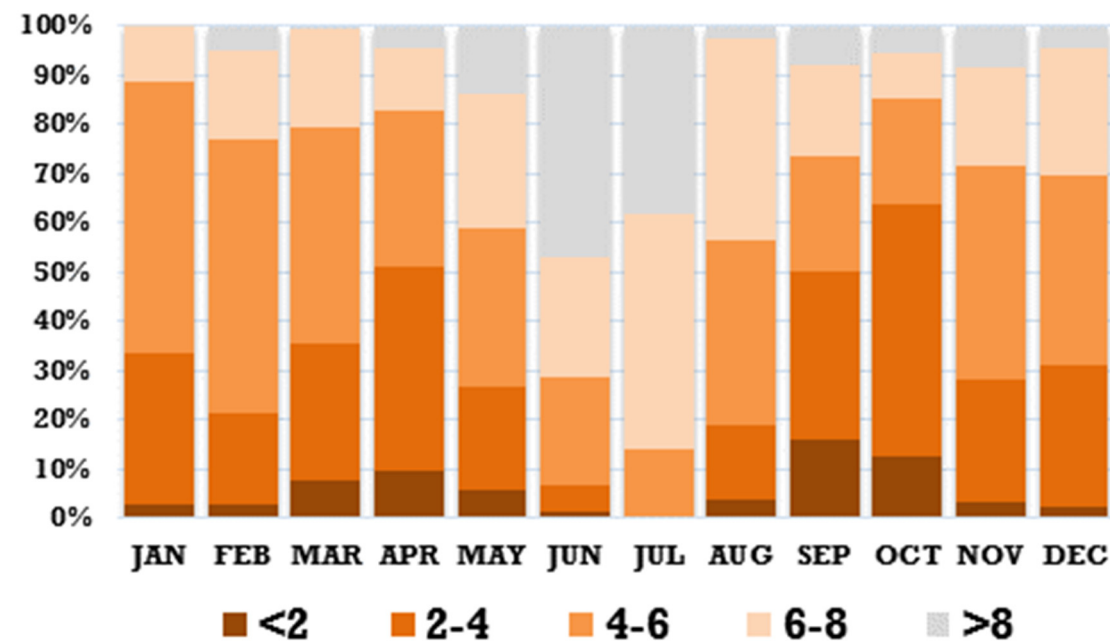


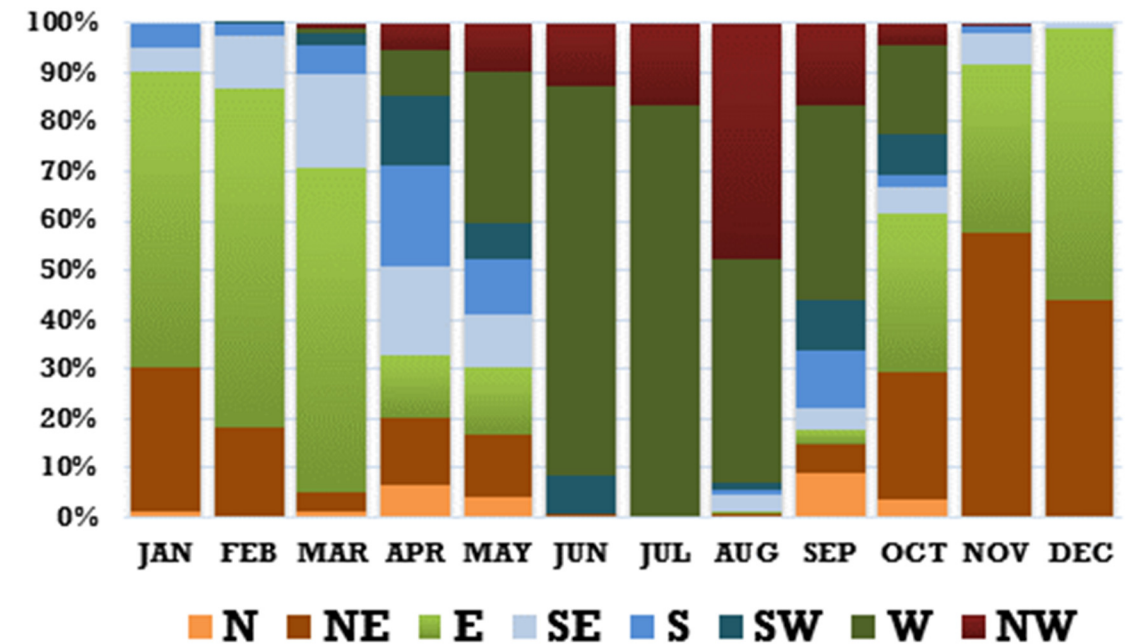
AVERAGE METEOROLOGY in BENGALURU

y-axis --- percent hours in each month

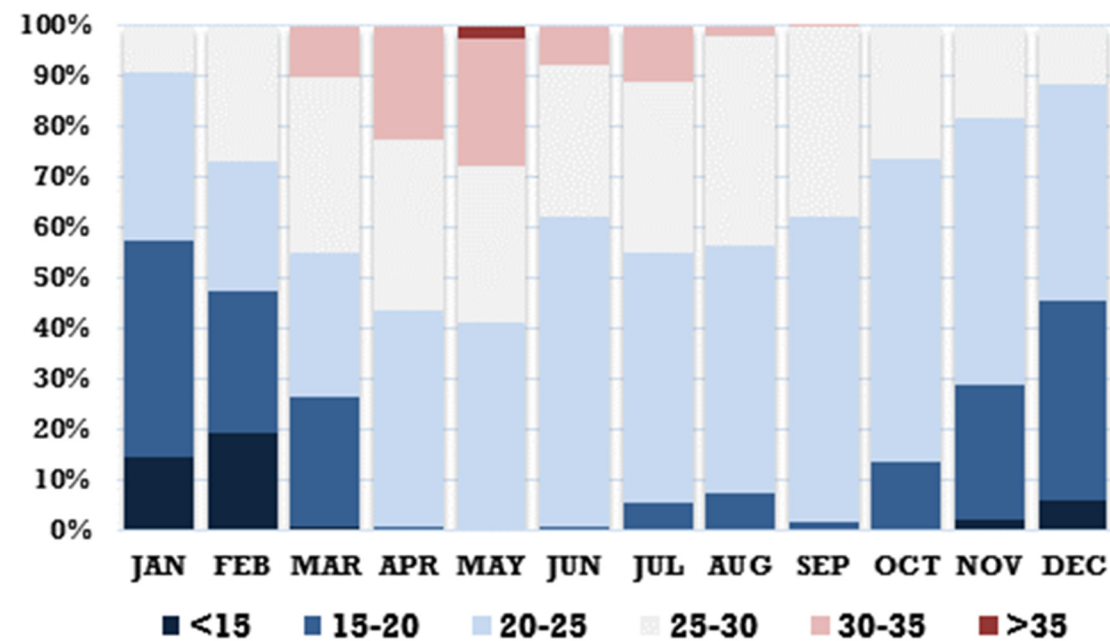
wind speeds (m/sec)



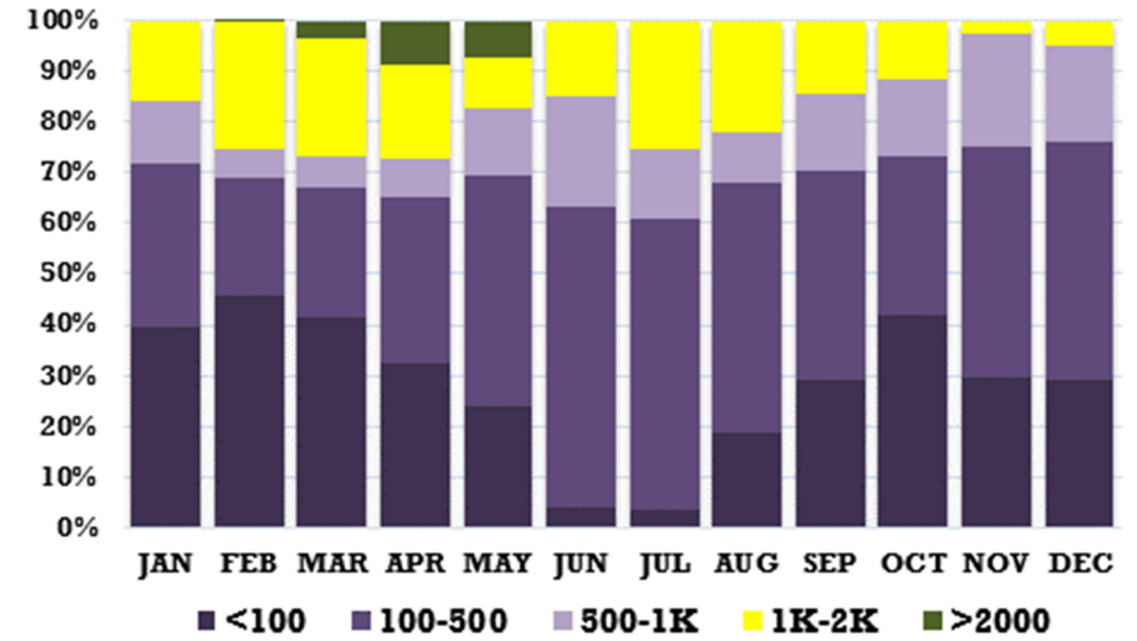
wind directions



Surface temperature (°C)



inversion heights (m)



This is a summary of WRF simulations over the Bengaluru region using NCEP Reanalysis data. Details are summarized at Air Pollution knowledge Assessments (APnA) city program for Indian cities (Link: <http://www.urbanemissions.info/india-apna>)