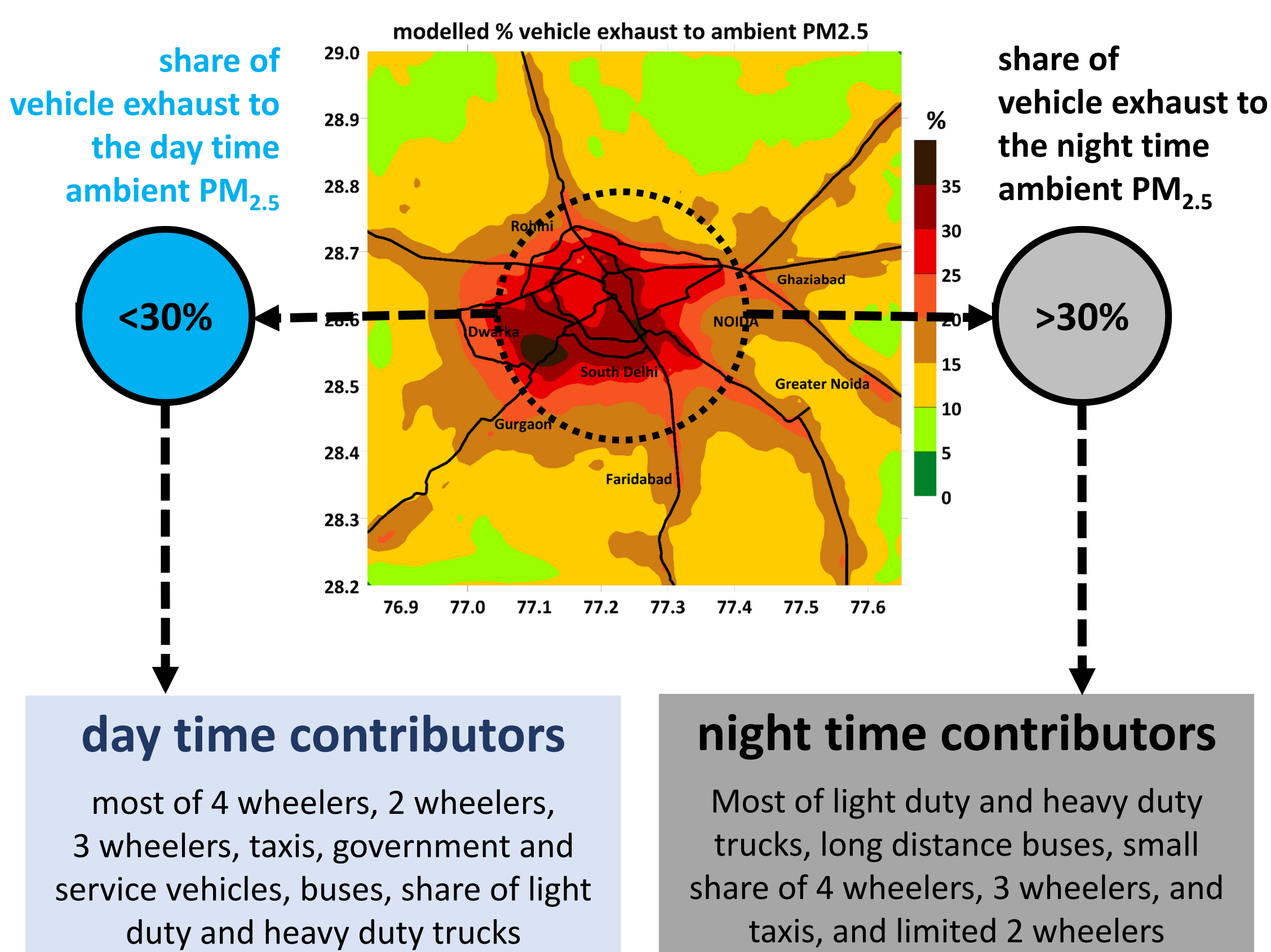
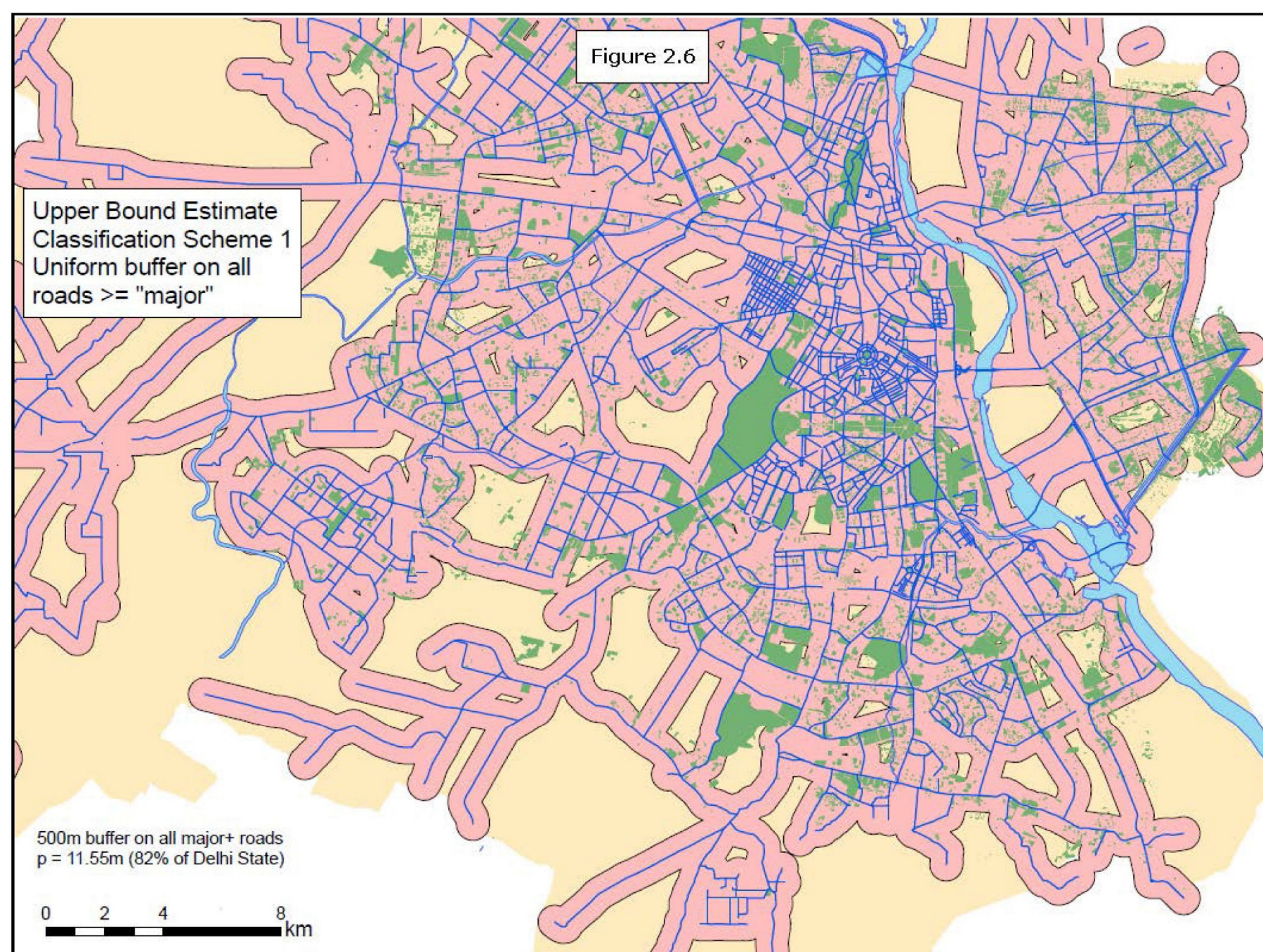


# benefits of restricting day time private vehicles in Delhi

## vehicle exhaust emissions



## on and near road exposure



**55%**

**of city population is exposed to pollution on-n-within 500 m of the major roads**

(source: Health Effects Institute)

**50% cut in the day time traffic is expected to substantially drop the day time share of vehicle exhaust to ambient  $PM_{2.5}$  pollution and exposure to day time vehicle exhaust**

## how to restrict vehicle movement?

### incentives and disincentives

more public transport  
promote safe walking and cycling  
more taxi services (3 and 4 wheeler)  
free public transport rides  
higher parking fees  
higher fines for pollution offenders  
travel restrictions based on registration

Modelling was conducted for the working domain covering an area of 80 km x 80 km, including the Delhi metropolitan area and its satellite cities, for primary and secondary  $PM_{2.5}$  pollution. References: Guttikunda and Calori (2013); Guttikunda and Goel (2014); Goel and Guttikunda (2015)